

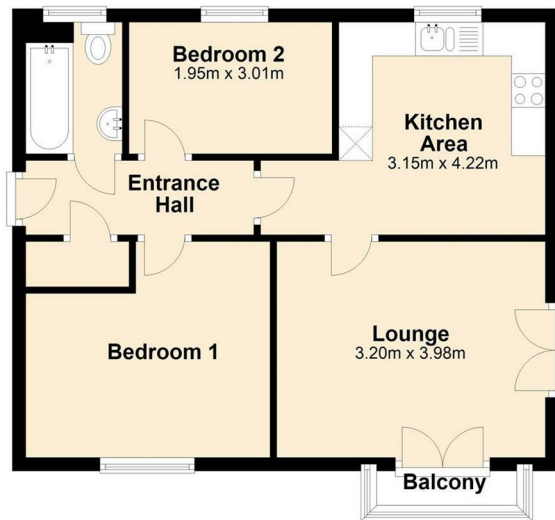


12 The Warren, Aylesbury, HP18 0FL

£183,000

- Chain free
- 668sq ft of living space
- Balcony and separate Juliet balcony
- Private parking
- 60 mins to London
- 20 Mins to Jct 9 M40

First Floor



Total area: approx. 51.2 sq. metres

THE PROPERTY

Located just a short walk from Aylesbury Vale Parkway train station and the A41, this first-floor apartment in Berryfields offers a blend of convenience and contemporary living. With modern amenities and a thoughtfully designed layout, this property is perfect for comfortable living.

Key Features:

- Location: Short walk to Aylesbury Vale Parkway train station and A41
- Floor: First floor
- Bedrooms: 1 Double bedroom with built-in double wardrobes, 1 generously sized single bedroom
- Parking: Allocated off-road parking to the rear of the apartments

Property Layout:

- Hallway: Welcoming hallway leading to all main rooms
- Modern Kitchen: Spacious kitchen equipped with integrated appliances
- Lounge: Bright lounge featuring patio doors that open onto a small balcony, with an additional set of doors leading to a Juliet balcony
- Bathroom: Contemporary family bathroom with a shower over the bath
- Storage: Includes a large storage cupboard for added convenience

Additional Information:

- Service Charge: £135 per month
- Ground Rent: £250 per year

This property is ideal for those seeking modern amenities in a convenient location. The proximity to major transport links and the thoughtfully designed living spaces make it a perfect choice for comfortable and stylish living.

For further details and to arrange a viewing, please contact us

SITUATION

Directions

Market House Market Sq, Aylesbury, HP1201TN

Tel: 01296 767555 Email: francis@360-properties.co.uk <https://www.360-properties.co.uk>